



Our Sister Concern

- Globe Soft Drinks Ltd.
- Globe Biotech Ltd.
- Globe Drugs Ltd.
- Globe Pharmaceuticals Ltd.
- AST Beverage Ltd.
- Globe Edible Oil Ltd.
- Globe Agrovet Ltd.
- Globe Biscuits & Dairy Milk Ltd.



GLOBE FISHERIES LTD.

غلوب مصايد الأسماك ليميتيد

Corporate Office: Plot 3/Ka (New), Tejgaon I/A, Dhaka-1208, Bangladesh.
PABX: +88-02-8879301-04, Fax: +88-02-8879309
Email: tabshiruddin43@gmail.com, globe.ho@gmail.com, globefisheries@gmail.com
Mobile: +8801755586297 (WhatsApp Number)
Registered Office: Alipur, Majidee Road, Begumgonj, Noakhali, Bangladesh.
Tel: +88-0321-51125, +88-0321-51829, Fax: +88-0321-51829
Factory: Mirwarishpur, Begumgonj, Noakhali, Bangladesh. Tel: +88-0321-53811



Freshness is our
PROMISE

GLOBE FISHERIES LTD.



Trimming Table

The way we ensure product quality ?

We ensure our product quality by using our own resources from fish feed to final delivery.

FISH FEED (Globe Agrovet Ltd.)

It all starts with our very own (in-house production) of fish feed. Our feed mill can produce around 3000 MT per month, using highest quality raw materials.

HATCHERY AND CULTIVATION (Globe Fisheries Ltd.)

Globe fisheries Ltd. uses its own hatchery to hatch and select the best specimen of fishes for cultivation in our own aqua culture project under constant supervision of trained personnel.

TRANSPORTATION (Globe Fisheries Ltd.)

The live fishes are then transported with our own water tanker to our processing facility maintaining appropriate temperature and oxygen level.

QUALITY CONTROL (Globe Fisheries Ltd.)

After arriving at our processing plant the live fishes then go through quality control checks. Globe Fisheries Ltd. believes in maintaining highest standards for all its products as per the latest national and international guidelines. Our laboratories are fully equipped with state of the art equipments. These help carry out microbiological analysis by trained rnicrobiologists to ensure good quality and safe products for our customers worldwide.

PROCESSING (Globe Fisheries Ltd.)

After passing the quality control checks the fish are then gutted and cleaned in our state-of-the-art processing facility. The process follows strict HACCP and GMP guidelines to ensure highest standards of hygiene. Before packaging the product goes through further QC checks.

PACKAGING AND DELIVERY (Globe Fisheries Ltd.)

After passing final QC check the fish then go for packaging. The product is then stored in our cold storage, capable of storing more than 1000 MT of finished products.

The finished products are then dispatched to our valued customers.





Fish Auto Washing Machine



Overview



Globe Pharmaceuticals Group of Companies, one of the leading corporate houses with diversified businesses established its complete fisheries division (Globe Fisheries Ltd.) in 2017, located in begumgonj upazilla of noakhali district, about 250 kilometers far from the capital city.

Globe Fisheries Ltd. has developed a state-of-the-art manufacturing facility which is approved to manufacture and export fish and fish-based products to Europe, North America and other parts of the world.

We are HACCP and ISO 22000:2005 certified organization.

Globe Fisheries Ltd. has a team of highly experienced professionals who collectively contribute in ensuring hygienic and high quality fish products for our customers.





Pangas Fillet Deheading Machine



Ribbon Fish



Pangas Fillet

Your well being Is our concern

The hatchery and cultivation unit is situated in Subarnachar, Noakhali, about 185 km from the capital Dhaka city. The total fisheries project area is about 250 acres. Globe Fisheries Ltd. mostly cultivates Rui (Rohu), Kotla (Catla), Sorputi (Olive Barb), Kali Baus (Orange-fin), Silver Carp, Tilapia, Pangas (Pangasius) etc. There are more than 130 ponds at Globe Fisheries for farming different sizes and varieties of fish. Globe Fisheries harvest around 1200-1500 MT of fish annually.

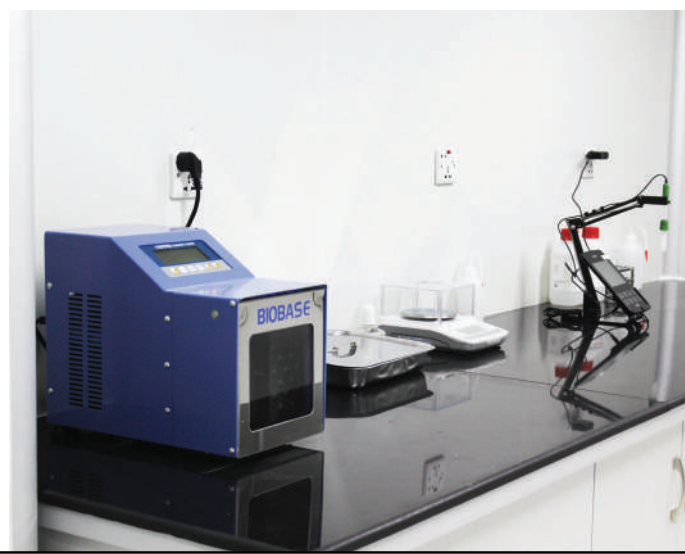
There are more than 200 people working in the cultivation and hatchery unit.





Why we ensure the best international standard?

Globe Fisheries Ltd. believes in maintaining the highest levels of quality as per international and national guidelines. Our In-House laboratories are fully equipped with world in class facilities. A team of highly trained microbiologists ensure that our customers receive the highest quality fish products.



Our way of doing

Our processing plant is situated in Mirwarishpur, Noakhali. Globe Fisheries Ltd. has developed a state-of-the-art manufacturing facility with machinery from KM Fish(Denmark). The process follows strict HACCP and GMP guidelines to ensure highest standards of hygiene. The total fish processing plant area is 150000 SQ.FT. It has been seperated into different functioning zones to maintain optimum environment required to ensure highest quality and safety.

Processing plant facilities

	Total
Production capacity: Plate freezer	08 MT/Day
Production capacity: IQF	22 MT/Day
Blast Freezer capacity	32 MT/Day
Frozen Storage capacity	350 MT
Flake Ice production capacity	12.5 MT/Day
Chill room capacity	10,000 Kg
Water chilling capacity	5000 L/ Hr
Water Treatment Plant Capacity	30000 L/Hr.

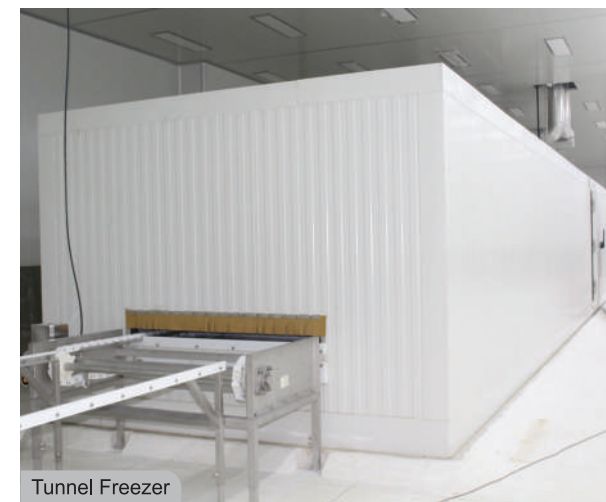
We have a team of 300 highly experienced professionals, who collectively contribute in developing and delivering hygienic and quality fish products for our customers.



Pangas Fillet Cutting Machine



Pangas Filleting Machine



Tunnel Freezer



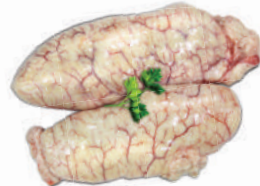
Hardener

Product Range

Globe is the principal brand of the establishment but to comply with buyer's specification and special requirements. The company also use buyers designated brand.

The company produces different types of products:

- a) **Species :** Pangas
Cut Types: Fillet, Butterfly, Slice, Skin, Belly, G/L, Stick,
Packaging: Egg,
Fillet-200/300 gm, 300/400 gm, 400/500 gm, 500/600 gm.
Butterfly- 500 gm and up, 1 kg and up.
G/L- 500 mg to 1 kg, 1 kg to 2 kg, 2 Kg to 3 kg and up.
Stick/Slice- 500 mg to 1 kg, 1 kg and up per poly bag and as per buyer's requirements.
- b) **Species :** Tilapia
Cut Types: Fillet, Whole , G/L , Cleaned.
Packaging: **Fillet-** 100/200 gm up (1 kg x 10 units),
Whole- 400/500 gm, 500/600 gm, 600/700 gm, 700/800 gm and up.
G/L- 400/500 gm, 500/600 gm, 600/700 gm, 700/800 gm and up,
Cleaned- 100/200 gm, 200/300 gm, 300/400 gm, 400/500 gm and up (1 kg x 10 units) per poly bag and as per buyer's requirements.
- c) **Species :** Shrimp, prawn (Sea Water, Sea Water Brown Fresh Water).
Type : Block Frozen/Individual Quick Frozen(I.Q.F.), Head On (H/On), Head Less Shell On (HLSO), Peel Undevein (PUD), Peel and Devein (P&D), Peel Undevein Tail On (PTO), Special cut P&D, Easy Peel, Butterfly, PUD Skewer.
Packaging: 2 kg block, 1 kg poly bag and as per buyer's requirements.



- d) **Species :** Different types of fishes (Rui, Boal, Keski, Mola, Chapila, Chela Pata, Puti, Tengra, Pabda, Foli, Ribbon, Red Snapper, Squid, Silver pomfret etc.)
Cut Types: Block Frozen/ Individual Quick Frozen (IQF)
Packaging: 250/300 gm, 500/600 gm, 800 gm, 1 kg and up per poly bag and as per buyer's requirements.



***Freshness* is our
PROMISE**



GLOBE FISHERIES LTD.

A SISTER CONCERN OF GLOBE PHARMACEUTICALS GROUP OF COMPANIES

The way we ensure our product quality

We ensure our product quality by using our resources from fish feed to final delivery.

FISH FEED

(Globe Agrovet Ltd.)

It all starts with our very own (in-house production) of fish feed. Our feed mill can produce around 3000 MT per month, using the highest quality raw materials.

HATCHERY AND CULTIVATION

(Globe Fisheries Ltd.)

Globe fisheries Ltd. uses its hatchery to hatch and select the best specimen of fish for cultivation in our aquaculture project under the constant supervision of trained personnel.

TRANSPORTATION

(Globe Fisheries Ltd.)

The live fish are then transported with our own water tanker to our processing facility maintaining appropriate temperature and oxygen level.

QUALITY CONTROL

(Globe Fisheries Ltd.)

After arriving at our processing plant the live fish then go through quality control checks. Globe Fisheries Ltd. believes in maintaining the highest standards for all its products as per the latest national and international guidelines. Our laboratories are fully equipped with state-of-the-art equipment. This help carries out microbiological analysis by trained microbiologists to ensure good quality and safe products for our customers worldwide.

PROCESSING

(Globe Fisheries Ltd.)

After passing the quality control checks the fish are then gutted and cleaned in our state-of-the-art processing facility. The process follows strict HACCP and GMP guidelines to ensure the highest standards of hygiene. Before packaging the product goes through further QC checks.

PACKAGING AND DELIVERY

(Globe Fisheries Ltd.)

After passing the final QC check the fish then go for packaging. The product is then stored in our cold storage, capable of storing more than 1000 MT of finished products. The finished products are then dispatched to our valued customers.



Freshness is our PROMISE



Freshness is our
PROMISE





Company Overview

We are delighted to inform you that, Globe Fisheries Limited a sister concern of Globe Pharmaceuticals Group of Companies Limited has introduced varieties of frozen Fish with established a complete fisheries division in 2017, located in Mirwarishpur, Begumgonj Upazilla of Noakhali district. Globe Fisheries Ltd. has developed a state-of-the-art manufacturing facility with machinery from KM Fish (Denmark), which is approved to manufacture and export fish and fish-based products to Europe, North America, and other parts of the world.

We are HACCP, EU, SGS, AQSIQ Association and USFDA certified organization.

Globe Fisheries Ltd. has a team of highly experienced professionals who collectively contribute to ensuring hygienic and high-quality fish products for our valued customers.



**Freshness is our
PROMISE**

Our way of doing

Globe Fisheries Ltd. has developed a state-of-the-art manufacturing facility with machinery from KM Fish (Denmark) and strictly follows the HACCP and GMP guidelines to ensure the highest standards of hygiene. The total fish processing plant area is 150000 SQ.FT. It has been separated into different functioning zones to maintain the optimum environment required to ensure the highest quality and safety.

Processing plant facilities	Total
Production capacity: Plate freezer	08 MT/Day
Production capacity: IQF	22 MT/Day
Blast Freezer capacity	32 MT/Day
Frozen Storage capacity	350 MT
Flake Ice production capacity	12.5 MT/Day
Chill room capacity	10,000 Kg
Water chilling capacity	5000 L/ Hr.
Water Treatment Plant Capacity	30000 L/Hr.



We have a team of 300 highly experienced professionals, who collectively contribute in developing and delivering hygienic and quality fish products for our customers.



**Freshness is our
PROMISE**





Shrimp/Prawn

Market name	: Freshwater Shrimp, Harina Shrimp/ Brown Shrimp, White Prawn, Cat Tiger Shrimp, Black Tiger/Bagda Chingri
Common Name	: Giant Freshwater Prawn, Speckled Shrimp, Banana Prawn, Grooved Tiger Prawn
Scientific name	: Macrobrachium Rosenbergii, Metapenaeus Monoceros, Penaeus Indicus, Penaeus Semisulcatus, Penaeus Monodon
India	: Mocha Chingri, Honye Chingri, Jinga
Japanese	: Onitenagaebi, Yoshiebi, Indo-ebi, Onitenagaebi, Kumaebi, Ebi

Details & Specification's

Process type	: HOSO, HLSO, Easy Peel, PND, PDT0, etc.	Raw & Cooked
Size	: 2-4, 4-6, 6-8, 8-12, 13-15, 16-20, 21-30, 31-40 to 300-500, etc. Pcs/KG & Broken	
Source	: Natural Farming/ Wild Caught	
Price CFR/FOB	: (USD)	

FORM OF PROCESSING	FREEZING STYLE	SIZE/COUNT
Headless Shell-on	Block Frozen/IQF/Semi IQF	As per the buyer's requirement
Headless Shell-on Easy Peel	Block Frozen/IQF/Semi IQF	As per the buyer's requirement
Head-on Shell-on	Block Frozen/IQF/Semi IQF	As per the buyer's requirement
P & D/R-PD	Block Frozen/IQF/Semi IQF	As per the buyer's requirement
P & D T/ON	Block Frozen/IQF/Semi IQF	As per the buyer's requirement
P & D T/ON Butterfly	Block Frozen/IQF/Semi IQF	As per the buyer's requirement
PUD Skewer	Block Frozen/IQF/Semi IQF	As per the buyer's requirement

Cooked shrimp, boiled shrimp or boil frozen shrimp products can be provided, and Delivery as per our valued buyer's requirement.

Packing: 6x4 Lb, 6x2 Kg, 6x1.8 Kg, 10x1 Kg, net weight net count, net weight frozen count with a % of Glazing or as per buyer's choice or vacuum packed.



**Freshness is our
PROMISE**



HOSO



HLSO



Easy Peel



P&D



PDTO



Cooked



Butterfly Cut



Skewer

Freshness is our PROMISE





Seafood/Brackish Water Fish

Products : Black, Chinese & Silver pomfret, Skipjack Tuna, Eel, Squid, Cuttlefish, Sardine, etc.

Details & Specification's

Process type : Whole, Gutless, Sliced/Steaks, Fillet, Head On Clean, Headless Clean
Source : Wild caught, Sea Frozen/ Land Frozen
Origin : Bangladesh
Payment Terms : LC or TT (for TT at least 50% advance/before delivery of docs copy)
Port : CFR Any Port Worldwide
Price CFR/FOB : (USD)

FORM OF PROCESSING	FREEZING STYLE	SIZE/COUNT
Whole	Block Frozen/IQF/Semi IQF	As per the buyer's requirement
Gutless	Block Frozen/IQF/Semi IQF	As per the buyer's requirement
Sliced/Steaks	Block Frozen/IQF/Semi IQF	As per the buyer's requirement
Fillet	Block Frozen/IQF/Semi IQF	As per the buyer's requirement
Head On Clean	Block Frozen/IQF/Semi IQF	As per the buyer's requirement
Headless Clean	Block Frozen/IQF/Semi IQF	As per the buyer's requirement

Packing Details: Boat Frozen/Land Frozen Bulk 10-23kg/as per the buyer's requirement



**Freshness is our
PROMISE**



Squid



Seabass



Silver Pomfret



Cattle Fish



Skipjack Tuna



Red Poa



Ribbon Fish



Bombay Duck

**Freshness is our
PROMISE**





Fresh Water/White Fish

Products : Bata, Catfish, Barb, Mola, Rohu, Catla, Pangasius, Taki, Punt, Chitol, Taposhi, Tangra, Kachki, Tilapia, Bowal, Baila, Kholisha, etc.

Details & Specification's

Process type : Whole, Gutless, Sliced/Steaks, Fillet, Head On Clean, Headless Clean
Source : Wild Caught/ Farmed
Origin : Bangladesh
Payment Terms : LC or TT (for TT at least 50% advance/before delivery of docs copy)
Port : CFR Any Port WorldWide
Price CFR/FOB : (USD)

FORM OF PROCESSING	FREEZING STYLE	SIZE/COUNT
Whole	Block Frozen/IQF/Semi IQF	As per the buyer's requirements
Gutless	Block Frozen/IQF/Semi IQF	As per the buyer's requirements
Sliced/Steaks	Block Frozen/IQF/Semi IQF	As per the buyer's requirements
Fillet	Block Frozen/IQF/Semi IQF	As per the buyer's requirements
Head On Clean	Block Frozen/IQF/Semi IQF	As per the buyer's requirements
Headless Clean	Block Frozen/IQF/Semi IQF	As per the buyer's requirements

Packing Details: Boat Frozen/Land Frozen Bulk 10-23kg/as per the buyer's requirement



**Freshness is our
PROMISE**



Pabda



Bata



Bowal



Pangas



Rohu



Magur



Ayre



Catla

**Freshness is our
PROMISE**





250gm

KACHKI
CLEANED



1 KG

KOI
CLEANED



250gm

CHAPILA
CLEANED



500gm

GULSHA
CLEANED



1 KG

HUNDRA BAILA
CLEANED



250gm

PUTI
CLEANED



1 KG

LOYTA
CLEANED



1 KG

ROHU STEAK
FAMILY CUT



1.5 KG

ROHU STEAK
CHINESE CUT



**Freshness is our
PROMISE**



WHITE FISH (BASA)
1 KG
FILLET



TELAPIA
1 KG
CLEANED



SHING
500gm
CLEANED



SHOR PUTI
500gm
CLEANED



TATKINI
500gm
CLEANED



POWA
1 KG
WHOLE



ICHA
150gm
DRY Fish



LOYTA
250gm
DRY Fish



CHURI
250gm
DRY Fish

**Freshness is our
PROMISE**





PALWAL

Local : Patal
Scientific: *Trichosanthes dioica*



STOLON OF TARO

Local : Kochur Loti
Scientific: *Colocasia esculenta*



HYACINTH BEAN

Local : Sheem
Scientific: *Lablab niger*



TARO

Local : kochu
Scientific: *Colocasia esculenta*



OKRA

Local : Dhedosh
Scientific: *Abelmoschus esculentus*



CARROTS

Local : Gajor
Scientific: *daucus carota* subsp. *sativus*



**Freshness is our
PROMISE**



LIMA BEAN

Local : Shimer Bichi
Scientific: Phaseolus limensis



PEAS BEAN

Local : Motorshuti
Scientific: Pisum sativum



MIXED VEGETABLE

Local : Mixed Shobji



JAGGERY

Local : Gur



RAS MALAI

Local : Rosso Malai



SWEET YOGHURT

Local : Misti Doi

**Freshness is our
PROMISE**



Fish Feed
Globe Agrovet Ltd.

01

Hatchery & Cultivation
Globe Fisheries Ltd.

02

Processing
Globe Fisheries Ltd.

03

04

Quality Control
Globe Fisheries Ltd.

05

Packaging
Globe Fisheries Ltd.

06

Transportation/Delivery
Globe Fisheries Ltd.

**OUR
PRODUCT
QUALITY**

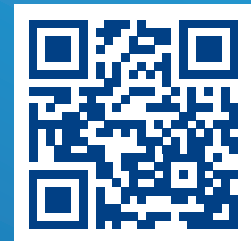


Corporate Office

- 📍 Plot 3/Ka (New), Tejgaon I/A, Dhaka-1208, Bangladesh
- ☎ +88 02 8879301-04
- 📞 +88 01711725123
- ✉ globe.ho@gmail.com, tabsiruddin43@gmail.com

Registered Office

- 📍 Alipur, Maijdee Road, Begumgonj, Noakhali, Bangladesh
- ☎ +88 0321 51125, +88 0321 52079
- 📞 +88 01711725123
- ✉ globe.ho@gmail.com, tabsiruddin43@gmail.com



WWW.GLOBE.COM.BD

Certified.



**AQSIA®
Association**



GLOBE PHARMACEUTICALS
GROUP OF COMPANIES



COMPANY OVERVIEW

The glorious journey of Globe Pharmaceuticals Limited started in 1986 with a dream of being 21st Century global business Conglomerate. After being successful in the pharmaceuticals business Globe diversified its business in the sector of the food and beverage market. The group has also grabbed its reputation in the overseas market for its quality products.

At present Globe Pharmaceuticals Group of Companies has 10 sister concerns, each specializing in different areas of production and service incorporating Pharmaceuticals, Bio-Tech, FMCG, Agroveter, Fisheries, Edible Oil, Media House, Hospital, etc. and continuing for exploration of bigger opportunities.

It's indeed growth, guided by a vision of business integration with a future that holds out newer promises and innovations for our valuable customers.

Royal Tiger[®]

Available in two SKUs and the following pack sizes per case:

250 ml Can : 1 x 24
250 ml PET : 1 x 24



BLACK HORSE[™]

Available in two SKUs and the following pack sizes per case:

250 ml Can : 1 x 24
250 ml PET : 1 x 24



Available in five SKUs and the following pack sizes per case:

250 ml CAN : 1 x 24
250 ml PET : 1 x 24
500 ml PET : 1 x 24
1000 ml PET : 1 x 12
2000 ml PET : 1 x 06



Available in five SKUs and the following pack sizes per case:

250 ml CAN : 1 x 24
250 ml PET : 1 x 24
500 ml PET : 1 x 24
1000 ml PET : 1 x 12
2000 ml PET : 1 x 06





Available in five SKUs
and the following
pack sizes per case:

250 ml CAN : 1 x 24
250 ml PET : 1 x 24
500 ml PET : 1 x 24
1000 ml PET : 1 x 12
2000 ml PET : 1 x 06



Available in five SKUs
and the following
pack sizes per case:

250 ml CAN : 1 x 24
250 ml PET : 1 x 24
500 ml PET : 1 x 24
1000 ml PET : 1 x 12
2000 ml PET : 1 x 06



Available in two SKUs
and the following
pack sizes per case:

175 ml PET : 1 x 24
250 ml PET : 1 x 24



Available in two SKUs
and the following
pack sizes per case:

175 ml PET : 1 x 24
250 ml PET : 1 x 24



Lychena™

Available in two SKUs
and the following
pack sizes per case:

175 ml PET : 1 x 24
250 ml PET : 1 x 24



Mangolee™

Mango Fruit Drinks

Available in three SKUs
and the following
pack sizes per case:

250 ml PET : 1 x 24
500 ml PET : 1 x 24
1000 ml PET : 1 x 12



Available in three SKUs
and the following
pack sizes per case:

250 ml PET : 1 x 24
500 ml PET : 1 x 24
1000 ml PET : 1 x 12



Available in one SKU
and the following
pack sizes per case:

250 ml PET : 1 x 24





Apple

Available in one SKU and the following pack sizes per case:

200 ml Aseptic Pack : 1 x 27



Mixed Fruits

Available in one SKU and the following pack sizes per case:

200 ml Aseptic Pack : 1 x 27



Pineapple

Available in one SKU and the following pack sizes per case:

200 ml Aseptic Pack : 1 x 27



Mixed Fruits

Available in one SKU and the following pack sizes per case:

200 ml Aseptic Pack : 1 x 27



Booster Energy Biscuits



Available in three SKUs and the following pack sizes per carton:

112 gm Pack : 1 x 6
70 gm Pack : 1 x 24
20 gm Pack : 1 x 48

Maxx Energy Biscuits



Available in one SKU and the following pack sizes per carton:

20 gm Pack : 1 x 48



Available in one SKU and the following pack sizes per carton:

55 gm Pack : 1 x 24



Available in one SKU and the following pack sizes per carton:

32 gm Pack : 1 x 24

Choco Bites



Available in two SKUs and the following pack sizes per carton:

120 gm Pack : 1 x 06
15 gm Pack : 1 x 24



Flavors: Chocolate, Orange, Strawberry.

Available in one SKU and the following pack sizes per carton:

22 gm Pack : 1 x 24

Digestive



Available in two SKUs and the following pack sizes per carton:

250 gm Pack : 1 x 36
400 gm Pack : 1 x 24

Classic



Available in one SKU and the following pack sizes per carton:

200 gm Pack : 1 x 12

Delicia



Available in one SKU and the following pack sizes per carton:

26 gm Pack : 1 x 24

DRY CAKE



Available in three SKUs and the following pack sizes per carton:

350 gm Pack : 1 x 12
140 gm Pack : 1 x 24
25 gm Pack : 1 x 48

PINEAPPLE



Available in two SKUs and the following pack sizes per carton:

90 gm Pack : 1 x 12
40 gm Pack : 1 x 24

Tea Toast



Available in one SKU and the following pack sizes per carton:

16 gm Pack : 1 x 60



Available in two SKUs and the following pack sizes per carton:

350 gm Pack : 1 x 12
150 gm Pack : 1 x 48

SWEET Toast



Available in two SKUs and the following pack sizes per carton:

400 gm Pack : 1 x 12
300 gm Pack : 1 x 12

Premium Sweet TOAST



Available in one SKU and the following pack sizes per carton:

300 gm Pack : 1 x 12

Orange



Available in one SKU and the following pack sizes per carton:

250 gm Pack : 1 x 6

DAIRY MILK



Available in one SKU and the following pack sizes per carton:

135 gm Pack : 1 x 6

MR. PUFF



Flavors: Lime, Orange.

Available in one SKU and the following pack sizes per carton:

24 gm Pack : 1 x 48

DELUXE



Available in one SKU and the following pack sizes per carton:

15 gm Pack : 1 x 48

TEXAS



Available in one SKU and the following pack sizes per carton:

15 gm Pack : 1 x 48

Mini Hearts



Available in one SKU and the following pack sizes per carton:

30 gm Pack : 1 x 30

Limca



Available in one SKU and the following pack sizes per carton:

133 gm Pack : 1 x 12

COCONUT COOKIES



Available in one SKU and the following pack sizes per carton:

400 gm Jar : 1 x 12

Butter Cookies



Available in one SKU and the following pack sizes per carton:

400 gm Jar : 1 x 12

CRUSTY



Available in one SKU and the following pack sizes per carton:

15 gm Pack : 1 x 90

Picco



Available in one SKU and the following pack sizes per carton:

12 gm Pack : 1 x 144

Chocoberry



Available in one SKU and the following pack sizes per carton:

10 gm Pack : 1 x 288

Twinkle



Flavors: Chocolate, Orange, Pineapple, Strawberry.

Available in four SKU and the following pack sizes per carton:

8 gm Pack : 1 x 288

Softy



Flavors: Banana, Chocolate, Orange, Strawberry.

Available in four SKU and the following pack sizes per carton:

10 gm Pack : 1 x 48

Yummy



Available in one SKU and the following pack sizes per carton:

10 gm Pack : 1 x 24



Flavors: Chocolate, Orange, Strawberry.

Available in three SKU and the following pack sizes per carton:

30 gm Pack : 1 x 80

BRITLE



Available in one SKU and the following pack sizes per carton:

18 gm Pack : 1 x 80

Potato Crackers



Available in one SKU and the following pack sizes per carton:

25 gm Pack : 1 x 80

Potato Crackers Bar-B-Q Flavour



Available in one SKU and the following pack sizes per carton:

25 gm Pack : 1 x 80

Hot Chanachur



Available in two SKUs and the following pack sizes per carton/bag:

140 gm Pack : 1 x 48
70 gm Pack : 1 x 96

PIKA



Flavors: Mexican Pepper, Tomato Chutney, Tom Yum.

Available in three SKU and the following pack sizes per carton:

25 gm Pack : 1 x 80

Globe Fried Peas



Available in one SKU and the following pack sizes per carton:

13 gm Pack : 1 x 192

KIKO



Available in two SKUs and the following pack sizes per carton:

320 gm Pack : 1 x 06
160 gm Pack : 1 x 09

Chanachur



Available in three SKUs and the following pack sizes per carton/bag:

350 gm Pack : 1 x 24
140 gm Pack : 1 x 48
70 gm Pack : 1 x 96

শুড়ি



Available in two SKUs and the following pack sizes per carton:

500 gm Pack : 1 x 10
400 gm Pack : 1 x 10
300 gm Pack : 1 x 10

BLACK HORSE



Available in one SKU and the following pack sizes per carton:

1.85 gm Pack : 1 x 50 x 12

CoffeeKER



Available in one SKU and the following pack sizes per carton:

1.85 gm Pack : 1 x 50 x 12

MONCHERE



Available in one SKU and the following pack sizes per carton:

1.85 gm Pack : 1 x 50 x 12

GLOBE
Aromatic Chittaguri Rice



Available in one SKU and the following pack sizes per bag:

1 kg Pack : 1 x 25

Brittle





Available in two SKUs and the following pack sizes per carton/bag:

200 gm Pack : 1 x 40
170 gm Pack : 1 x 25




OUR REACH

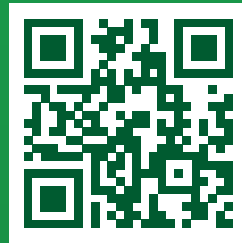


Corporate Office

-  Plot 3/Ka (New), Tejgaon I/A, Dhaka-1208, Bangladesh
-  +88 02 8879301-04
-  +88 01711725123
-  globe.ho@gmail.com, tabsiruddin43@gmail.com

Registered Office

-  Alipur, Maijdee Road, Begumgonj, Noakhali, Bangladesh
-  +88 0321 51125, +88 0321 52079
-  +88 01711725123
-  globe.ho@gmail.com, tabsiruddin43@gmail.com



WWW.GLOBE.COM.BD



E-BROCHURE

Certified:

